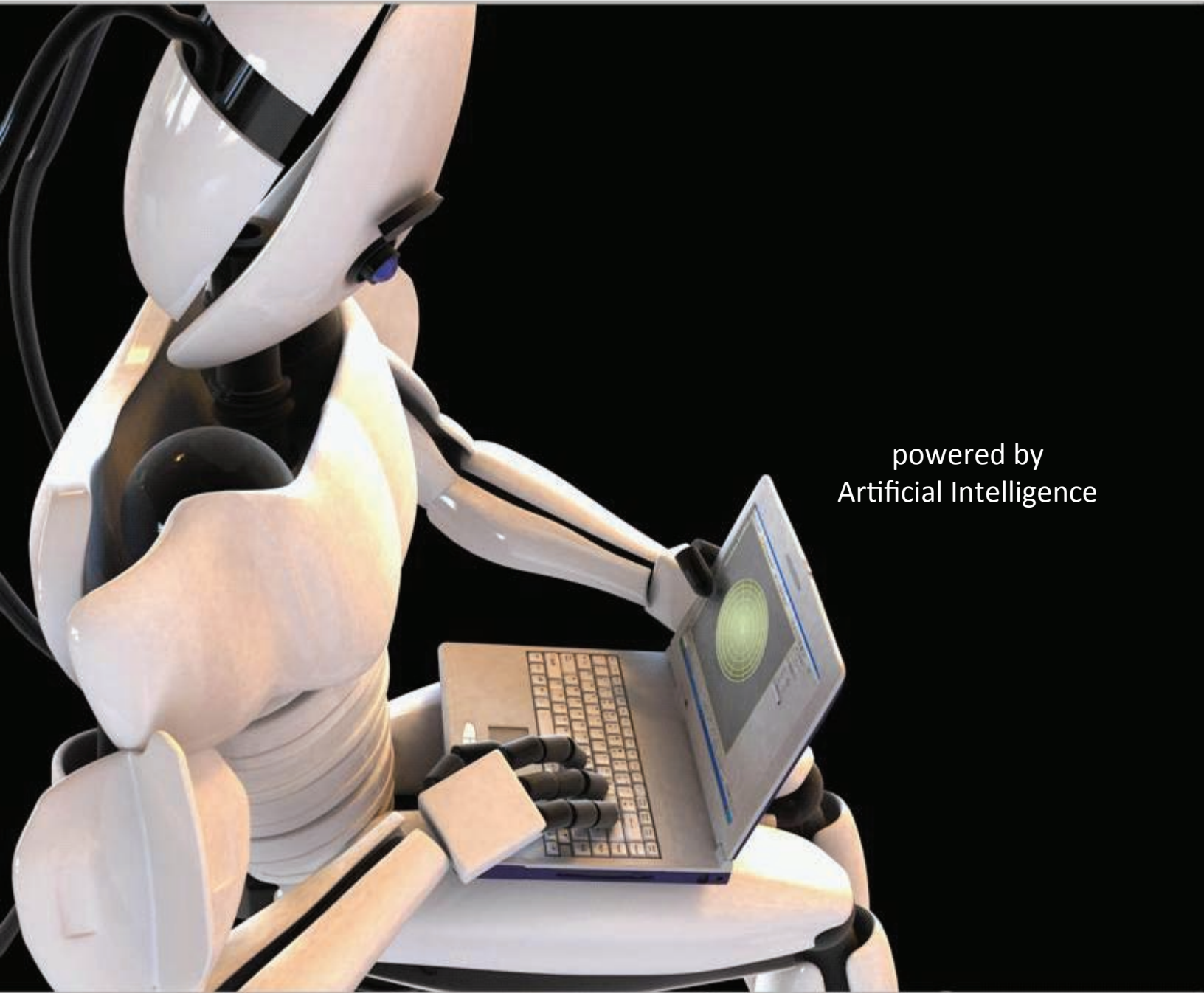


# Next Generation BSA Compliance and Fraud Detection Software



powered by  
Artificial Intelligence



### CUSTOMER RISK SCORING

addresses both static and dynamic risk  
risk scores customers as per BSA Exam Manual  
analyzes all transactions for every customer  
performs dynamic risk scoring for all customers  
ranks customers to allow assessment of risk

### SUSPICIOUS ACTIVITY DETECTION

scans all transactions (deposits, wires, ACH, etc.)  
red flags suspicious activity  
checks incoming and outgoing wires  
facilitates EDD for high risk accounts and activity  
provides extensive selection of investigation tools

### CURRENCY TRANSACTION REPORTING

identifies and automates CTR reporting  
collects information from core banking system  
pre-populates required reports  
allows reports to be edited and shared with others  
electronically submits reports to IRS Computing Centre

### SUSPICIOUS ACTIVITY REPORTING

automates SAR reporting  
pre-populates required suspicious activity reports  
electronically submits reports to IRS Computing Centre

### LINK ANALYSIS

compares customer information profiles  
links accounts with matching information  
allows user to verify or reject link results  
groups accounts for analysis

### BSA RECORD KEEPING

monetary instrument logs  
funds transfers logs  
SAR Board of Directors Report  
others as per FFIEC BSA/AML Exam Manual

### DEBIT FRAUD

- identifies unusual patterns in card usage
- identifies high velocity ATM/POS transactions
- identifies unusual locations
- fuses evidence to identify fraud scenarios

### CHECK FRAUD

- identifies unusually large checks
- identifies check kiting patterns
- flags out-of-sequence checks

### ACCOUNT FRAUD

- identifies unusual activity on new accounts
- identifies unusual activity on dormant accounts
- identifies unusual online activity

### CASE MANAGEMENT

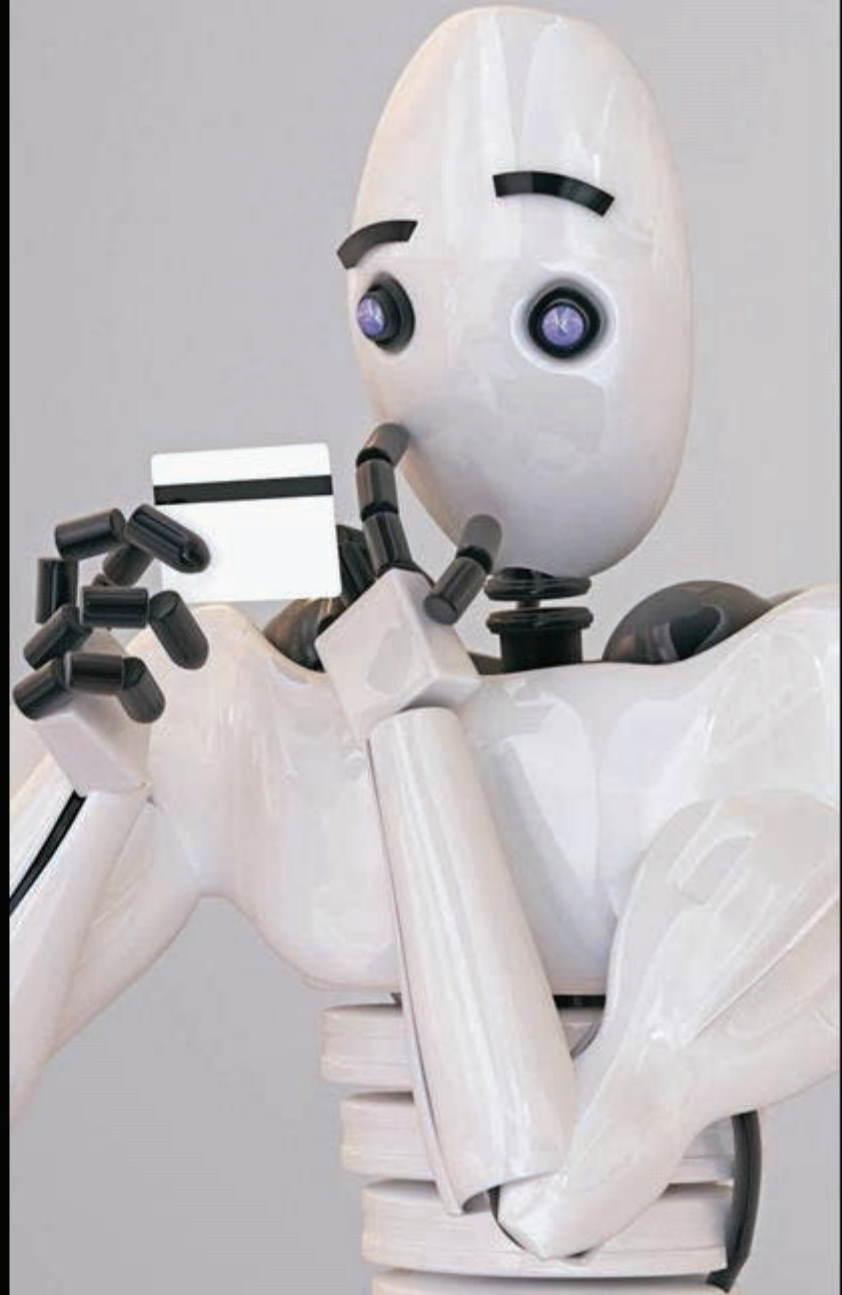
- allows user to open and track cases
- allows user to add related documents
- provides an audit trail for examiners
- allows user to assign case priority levels
- allows cases to be shared with others

### WATCH LIST CHECKING

- checks account holders against OFAC SDN list
- performs 314(a) searches
- checks incoming and outgoing wires
- flags positive matches
- alerts compliance officer
- accommodates fraud lists and internal watch lists
- maintains exemption lists

### FACTA RED FLAGS

- facilitates the creation of red flags
- configures red flags by type
- assigns investigation/expiration to flagged accounts
- performs more intense monitoring on accounts
- checks identification info against internal watch lists
- SSN verification
- mines for suspicious personal identification info
- analyzes for fraudulent patterns/inconsistent activity



Verafin is one of North America's leading BSA/AML Compliance and Fraud Detection software providers. Its solution helps financial institutions comply with the Bank Secrecy Act and the USA PATRIOT Act. It also helps protect them against banking fraud.

Its comprehensive solution includes customer risk scoring; suspicious activity detection; automated BSA reporting; electronic report submission; watch list and 314(a) checking; fraud detection (check, debit, new and dormant account, etc.); and case management. Many of its AML features directly mirror the requirements as specifically outlined in the FFIEC BSA/AML Examination Manual. Its 'next generation' analytics excel at detecting unusual activity while minimizing false positives.

Verafin's solution interfaces with any core banking system.

It also interfaces with the IRS Enterprise Computing Centre (Detroit) for electronic submission of CTRs and SARs through Secure Direct Transfer Mode (SDTM).

